

RONDO



INDEX

Specifications	2
Options	2
Drawings	4
Durability classes	6
C02-storage	7
Downloads	7



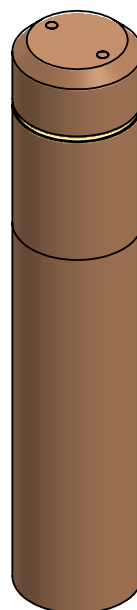
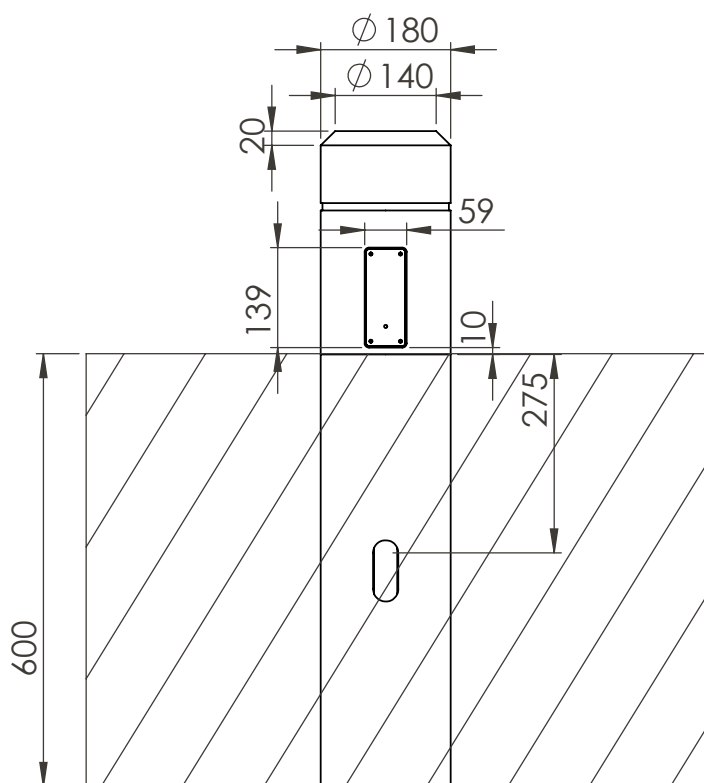
SPECIFICATIONS

- **IP rating:** IP54
 - **Power per LED module:** 2.4 Watt
 - **LED module lifetime:** >100.000 H (L90,B10)
 - **Lighting data:** LDT / IES files are available at www.timberlab-solutions.com or in the Dialux library: <https://silver.dialux.com/timberlab>
 - **BUG rating:** B0, U0, G0
 - **CE marked**
 - **Packaging:**
- | | |
|--------------------------------|----------------------|
| Pallet dimensions (L x W x H): | 1500 x 800 x 1500 mm |
| Pack quantity per pallet: | 98 |
| Pallet weight (KG): | 1500 |

OPTIONS

- **Voltage:** 230 VAC of 12-24 VAC/DC
- **Wood type:** Chestnut (round) or Oak (rectangle)
- **Certification:** FSC or PEFC
- **Light colour:** 2.200K, 2.700K, 4.000K, 3.000K/amber or amber (593nm)
- **Connection:** Available with or without cable (1m 3x1.5mm²). A 32mm hole is standard in the fixture for easy passage of your ground cable
- **DALI Control**
- **Mast access door with triangular lock / with fuse box**
- **Powder coating of post holders**
- **Dynamic motion sensor**
- **Variations:** At Timberlab, each fixture is custom-made with care. In addition to the standard options, we are happy to help create variations tailored to your application. Feel free to contact our project advisors with any questions at www.timberlab-solutions.com.





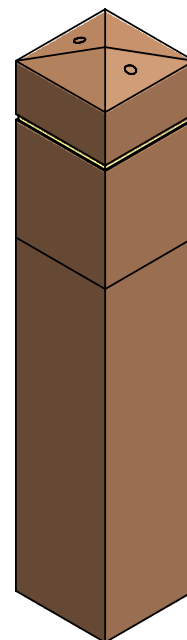
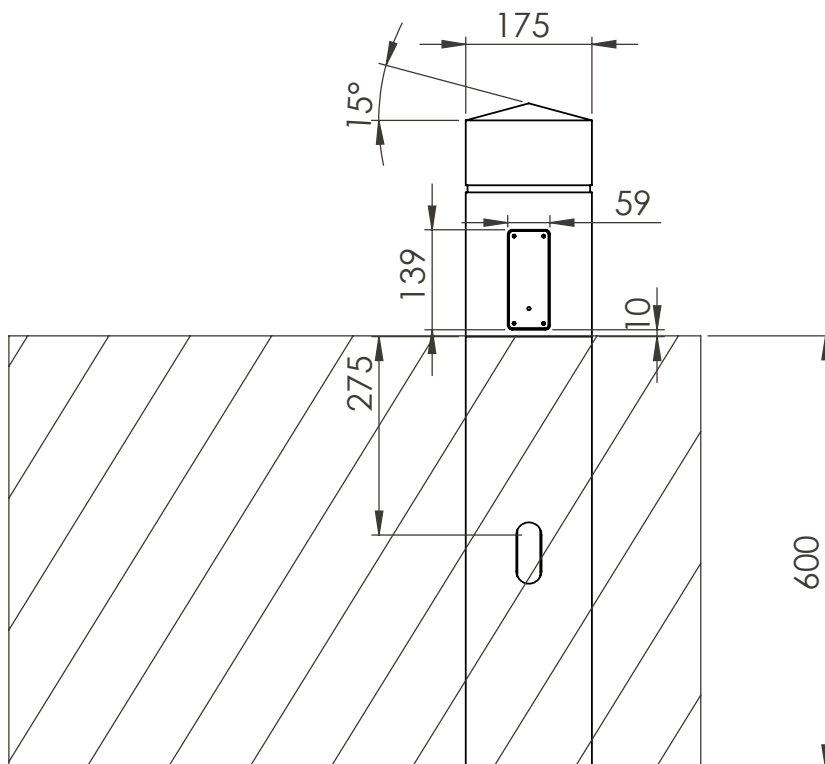
timberlab

Timberlab B.V. - Harskamperweg 32 - 6731AB Otterlo
The Netherlands T +31 (0)318 943617 -

TITLE: RONDO rond			
FILE: Production drawing	REVISION	A	29-11-2024
Drawn by:	Checked by: TvD	MATERIAL:	A4

Scale: 1:10

SHEET 1 OF 1



timberlab

Timberlab B.V. - Harskamperweg 32 - 6731AB Otterlo
The Netherlands T +31 (0)318 943617 -

TITLE: RONDO vierkant			
FILE: Production drawing	REVISION A	29-11-2024	
Drawn by:	Checked by: TvD	MATERIAL:	A4

Scale: 1:10

SHEET 1 OF 1



The mark of
responsible forestry

FSC®

The Forest Stewardship Council (FSC) is an international organization dedicated to global conservation and responsible forest management. FSC defines responsible forest management as the balanced consideration of ecological, social, and economic aspects associated with forestry.



PEFC™

PEFC is an international certification mark that guarantees wood and paper products originate from sustainably managed forests, ensuring the preservation of forest areas.

DURABILITY CLASSES

Class	Lifespan	Wood species
I	>25 years	Accoya*, cumaru
II	15 – 25 years	Chestnut, oak
III	10 – 15 years	Douglas fir
IV	5 – 10 years	
V	< 5 years	

* Accoya is guaranteed to last for over 50 years above ground and 25 years in ground or freshwater. For more information, visit www.accoya.com.



CO2-Storage

	Rondo rond		Rondo square	
	Weight	CO2	Weight	CO2
Chestnut	10 kg	15 kg	-	-
Oak	-	-	35 kg	22 kg

DOWNLOADS

For more information, visit <https://timberlab-solutions.com/> where you can find a manual, 3Ds file, and create a lighting plan with our Light Calculator.

The documents that can be downloaded are:

- Datasheet Smart Motion Sensor
- Manual

Other links are:

- Specification text
- Lighting plan

Disclaimer

The information presented in this datasheet is carefully compiled by Timberlab with care and attention. Nevertheless, it is possible that the information published in the datasheet is incomplete and/or incorrect.

