

# WALLY



## INDEX

Specifications	2
Options	2
Drawings	3
Durability classes	4
CO2-storage	5
Downloads	5



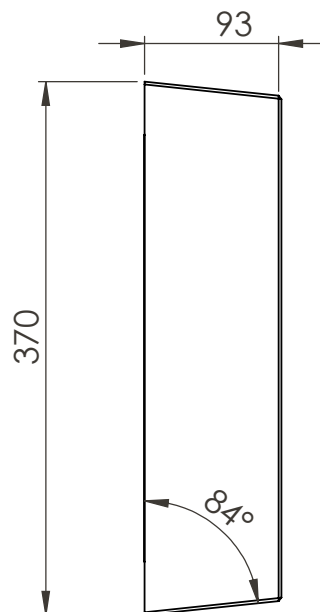
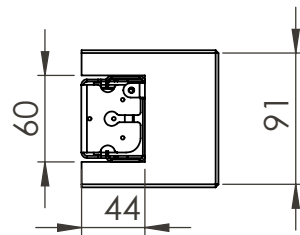
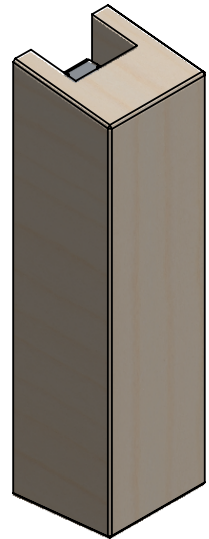
## SPECIFICATIONS

- **IP class:** IP54
- **Voltage:** 230 volts
- **Power:** 2.4 / 3.6 watt (1 / 2 x LED)
- **Lumen output per LED module:**
  - 2,700K = 120 lm
  - 4,000K = 150 lm
  - amber = 82 lm
- **Beam angle:** The LED module has a beam angle of 120 degrees.
- **Lifespan:** >100.000 H (L90,B10)
- **CO2 storage:** See table below.

## OPTIONS

- **Wood type:** Douglas fir, oak, chestnut or Accoya
- **Quality mark:** FSC or PEFC
- **Light colour:** Available in 2.700K, 4.000K and amber (593 nm)
- **Number of LED modules:** Light up, light down or both





timberlab

Timberlab B.V. - Harskamperweg 32 - 6731AB Otterlo  
The Netherlands T +31(0)318 943617 -

TITLE: WALLY			
FILE: Production drawing		REVISION A	31-10-2024
Drawn by: DR	Checked by: TvD	MATERIAL:	A4

Scale: 1:5

SHEET 1 OF 1



The mark of  
responsible forestry

# FSC®

The Forest Stewardship Council (FSC) is an international organization dedicated to global conservation and responsible forest management. FSC defines responsible forest management as the balanced consideration of ecological, social, and economic aspects associated with forestry.



# PEFC™

PEFC is an international certification mark that guarantees wood and paper products originate from sustainably managed forests, ensuring the preservation of forest areas.

## DURABILITY CLASSES

Class	Lifespan	Wood species
I	>25 years	Accoya*, cumaru
II	15 – 25 years	Chestnut, oak
III	10 – 15 years	Douglas fir
IV	5 – 10 years	
V	< 5 years	

\* Accoya is guaranteed to last for over 50 years above ground and 25 years in ground or freshwater. For more information, visit [www.accoya.com](http://www.accoya.com).

## C02-Storage

	wally	
	Weight	C02
Douglas fir	5 kg	8 kg
Chestnut	5 kg	8 kg
Oak	6 kg	10 kg
Accoya	5 kg	7kg

## DOWNLOADS

For more information, visit <https://timberlab-solutions.com/> where you can find a manual, 3Ds file, and create a lighting plan with our Light Calculator.

The documents that can be downloaded are:

- Datasheet Smart Motion Sensor
- Manual

Other links are:

- Specification text
- Lighting plan

### Disclaimer

The information presented in this datasheet is carefully compiled by Timberlab with care and attention. Nevertheless, it is possible that the information published in the datasheet is incomplete and/or incorrect.

